

“Romantic Medallion”

Designed by Mary Koval
Written by Debby Kratovil
Featuring the Cynthia collection by Mary Koval
Finished Size: 79 x 79”



Check www.windhamfabrics.com Free Project section to see if there are any pattern updates before you start your quilt

WINDHAM FABRICS

812 Jersey Ave ~ Jersey City, NJ 07310 ~ 201.659.0444 ~ FAX: 201.659.9719
www.windhamfabrics.com email: retail@windhamfabrics.com

“Romantic Medallion”

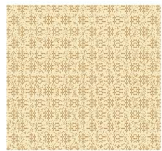
Page 2



39496-1



39499-1



39502-1



39503-2



39497-2



39497-1



39498-1



39498-3



39498-4



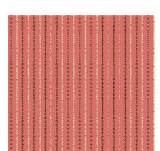
39499-4



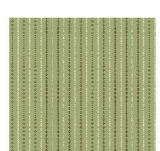
39499-5



39500-1



39500-3



39500-4



39500-6



39501-3



39501-4



39501-6



39502-3



39502-4



39503-4



39496-2

Backing and binding

Fabric requirements:

1 yard 39496-1 Cream (center)

1 1/4 yards 39499-1 Cream (border not pieced)

1 1/2 yards 39502-1 Cream

1 1/2 yards 39503-2 Dark Green

1/2 yard 39497-2 Dark Green

2 1/3 yards 39497-1 Cream (outer border not pieced)

1 Fat Eighth each:

39498-1 Cream, 39498-3 Rose, 39498-4 Sage, 39499-4 Sage, 39499-5 Slate,

39500-1 Cream, 39500-3 Rose, 39500-4 Sage, 39500-6 Gold, 39501-3 Rose

39501-4 Sage, 39501-6 Gold, 39502-3 Rose, 39502-4 Sage, 39503-4 Sage

2/3 yard 39496-2 Dark Green (for binding)

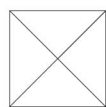
5 yards 39496-2 Dark Green for Backing

“Romantic Medallion”

Page 3

Cutting and Piecing:

1. From the floral print 39496-1 Cream, cut a 28-1/2" square for the quilt center.
2. From the 39503-2 Dark Green and 39502-1 Cream cut 5 strips 3-1/4" x wof. Re-cut into sixty-five 3-1/4" squares. Cut each square into four triangles (see Diagram 1).



Cut 65



Cut 65

Diagram 1

Sew 14 Dark Green triangles with 15 Cream triangles into a long row, beginning and ending with the Cream triangles. Press seams toward the Dark Green. Make four of these rows for the inner triangle row (see Diagram 2).



Diagram 2: Make 4

3. Center a triangle row with the floral quilt center square, pin and stitch. If needed, trim away the cream triangle ends even with the center square. Repeat for the opposite side of the center square.

4. Add remaining Green/Triangle rows to last two sides. Press seams toward the center square. Quilt center now measures 30-1/4" square (see Diagram 3).

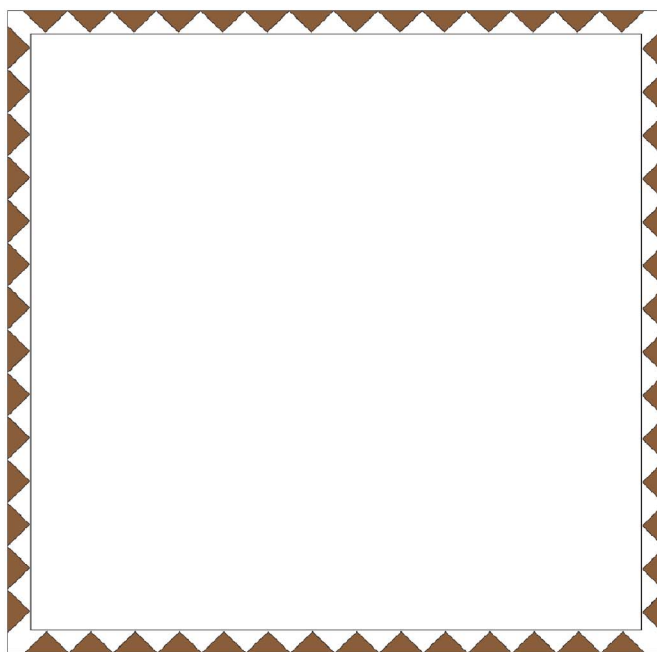


Diagram 3

“Romantic Medallion”

Page 4

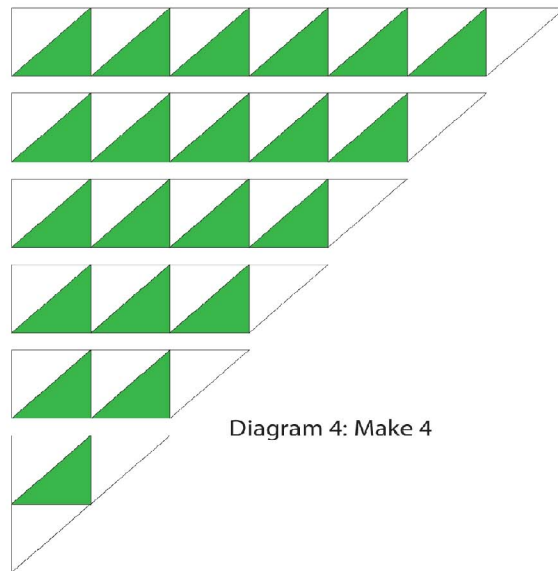


Diagram 4: Make 4

5. Cut 42 squares $3\text{-}\frac{7}{8}\text{''} \times 3\text{-}\frac{7}{8}\text{''}$ from 39497-2 Dark Green and an assortment of 56 squares $3\text{-}\frac{7}{8}\text{''} \times 3\text{-}\frac{7}{8}\text{''}$ from the other prints (fat eighth pieces). On the wrong side of each of 42 light squares, draw a line along one diagonal. Pair a light square with a Dark Green square and sew $\frac{1}{4}\text{''}$ along both sides. Cut the unit apart along the center line for a total of two half-square triangles. Make a total of 84 triangle squares. Cut the remaining 14 light squares in half and piece into the four large triangle units as shown in Diagram 4. Make 4 of these units. Sew to quilt center as shown in Diagram 5.

Quilt center now measures $42\text{-}\frac{1}{2}\text{''} \times 42\text{-}\frac{1}{2}\text{''}$.

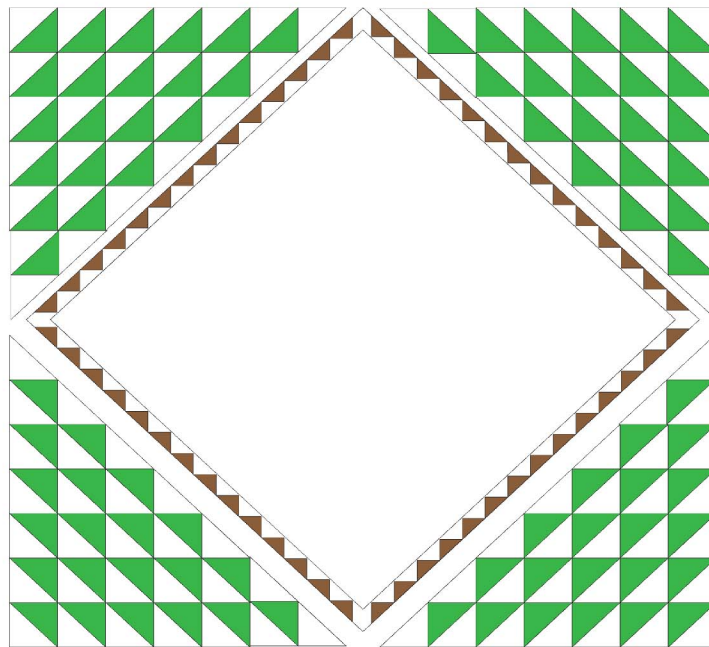


Diagram 5

“Romantic Medallion”

Page 5

6. Using the Dark Green and Cream triangles cut in Step 1 above, make a triangle row using 21 Green triangles and 23 Cream triangles. Trim short ends of each row at a 90 degree angle. Make four triangle rows that measure 1-1/2" x 42-1/2". Sew one of these to two opposing sides of quilt center. Cut four 1-1/2" squares from the Cream fabric to square up the short ends of the remaining two triangle rows. Sew these last two rows to the last two sides. Quilt center now measures 44-1/2" x 44-1/2". Pay attention to the illustration on first page to make sure triangle rows face the proper way.
7. From the 39499-1 Cream cut two 8" x 44-1/2" strips and sew to two opposite sides of the quilt center. Cut two 8" x 59-1/2" strips and sew to remaining sides of quilt center. Quilt center now measures 59-1/2" x 59-1/2".
8. Make four more Dark Green and Cream triangle rows using the remaining triangles. Sew each row with 29 Green triangles and 31 Cream triangles. You may need to add a cream square to each short end to take it up to the 59-1/2" width. Make 4 of these triangle rows and sew to quilt center as before.
9. Cut the final outside borders from the 39497-1 Cream as follows: two 9-1/2" x 61-1/2" strips and two 9-1/2" x 79-1/2" strips.
10. Layer quilt top, batting and backing and quilt as desired.
11. Cut 8 strips 2-1/4" x wof from the 39496-2 Dark Green for the binding.

